

# Biotinylated Human BTLA Protein

Cat. No. BTL-HM401B

## Description

<b>Source</b>	Recombinant Biotinylated Human BTLA Protein is expressed from HEK293 with His tag and Avi tag at the C-Terminus. It contains Lys31-Ser150.
<b>Accession</b>	Q7Z6A9-1
<b>Molecular Weight</b>	The protein has a predicted MW of 16.7 kDa. Due to glycosylation, the protein migrates to 38-50 kDa based on Tris-Bis PAGE result.
<b>Endotoxin</b>	Less than 1EU per µg by the LAL method.
<b>Purity</b>	> 95% as determined by Tris-Bis PAGE > 95% as determined by HPLC

## Formulation and Storage

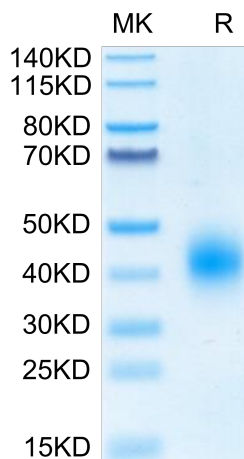
<b>Formulation</b>	Lyophilized from 0.22µm filtered solution in PBS (pH 7.4). Normally 8% trehalose is added as protectant before lyophilization.
<b>Reconstitution</b>	Centrifuge the tube before opening. Reconstituting to a concentration more than 100 µg/ml is recommended. Dissolve the lyophilized protein in distilled water.
<b>Storage</b>	-20 to -80°C for 12 months as supplied from date of receipt. -20 to -80°C for 3-6 months in unopened state after reconstitution. 2-8°C for 2-7 days after reconstitution. Recommend to aliquot the protein into smaller quantities for optimal storage. Please minimize freeze-thaw cycles.

## Background

B- and T-lymphocyte attenuator (BTLA; CD272) is a 35 kDa type I transmembrane glycoprotein in the CD28 family of T cell costimulatory molecules. BTLA is a inhibitory receptor on lymphocytes that negatively regulates antigen receptor signaling via PTPN6/SHP-1 and PTPN11/SHP-2. BTLA may interact in cis (on the same cell) or in trans (on other cells) with TNFRSF14.

## Assay Data

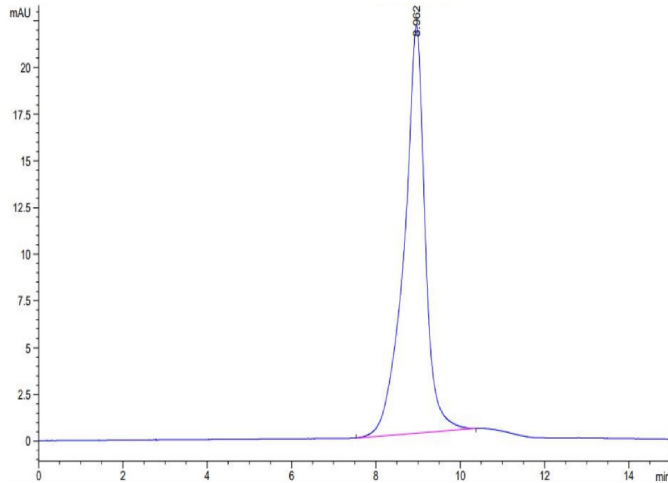
### Tris-Bis PAGE



Biotinylated Human BTLA on Tris-Bis PAGE under reduced condition. The purity is greater than 95%.

### SEC-HPLC

Assay Data

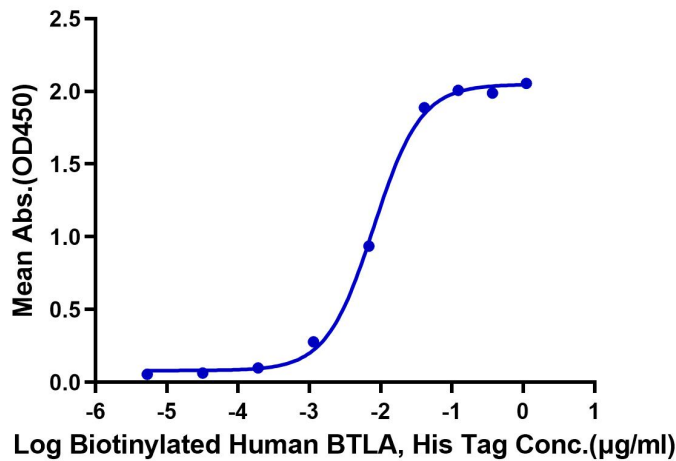


The purity of Biotinylated Human BTLA is greater than 95% as determined by SEC-HPLC

ELISA Data

**Biotinylated Human BTLA, His Tag ELISA**

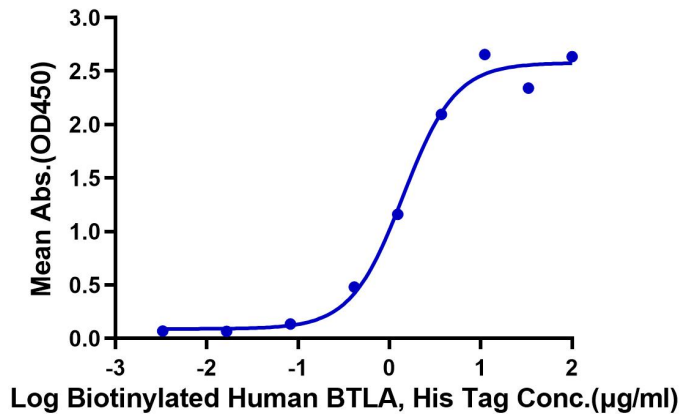
0.05µg Anti-BTLA antibody, hFc Tag Per Well



Immobilized Anti-BTLA Antibody, hFc Tag at 0.5µg/ml (100µl/well) on the plate. Dose response curve for Biotinylated Human BTLA, His Tag with the EC50 of 8.0ng/ml determined by ELISA.

**Biotinylated Human BTLA, His Tag ELISA**

0.5µg Human HVEM, hFc Tag Per Well



Immobilized Human HVEM, hFc Tag at 5µg/ml (100µl/Well) on the plate. Dose response curve for Biotinylated Human BTLA, His Tag with the EC50 of 1.4µg/ml determined by ELISA.